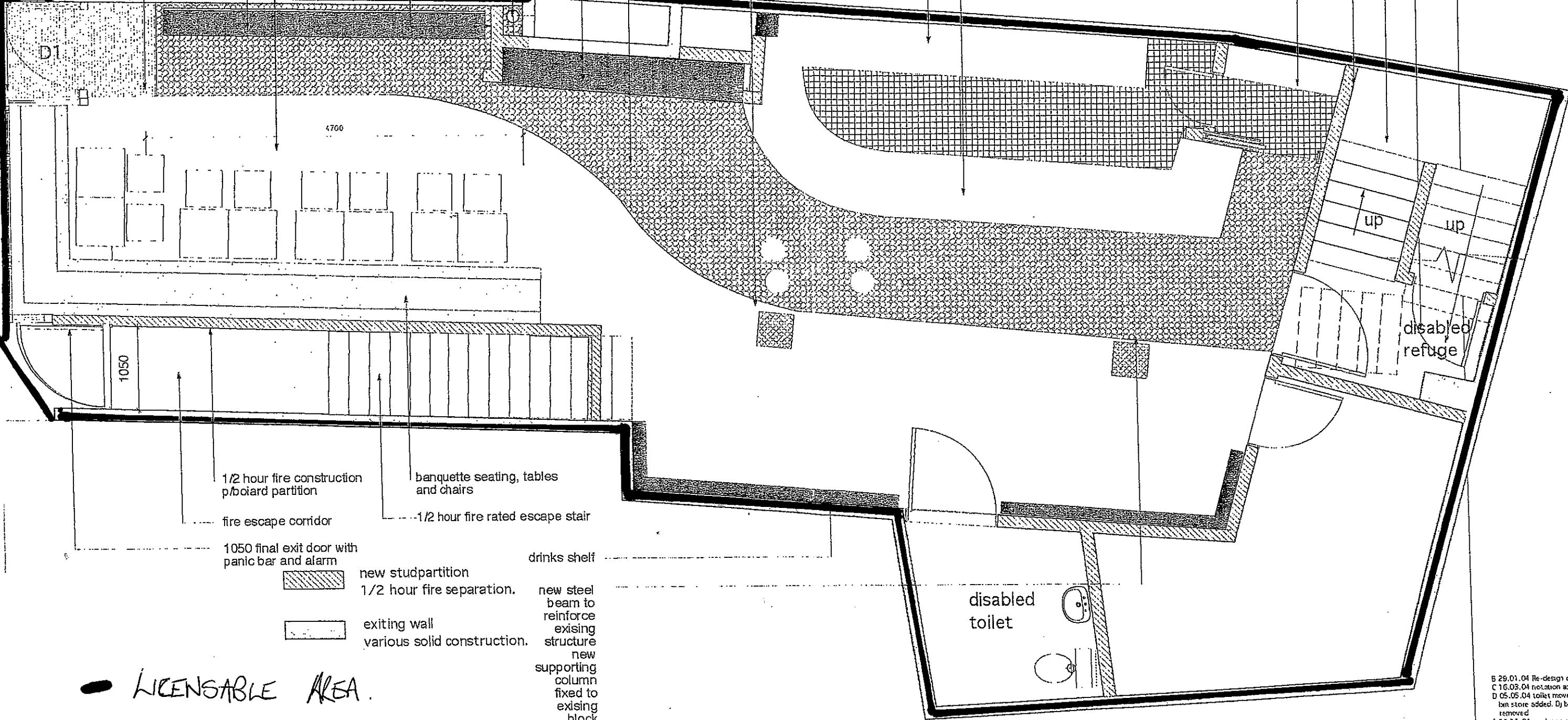


bi-folding windows approx 1100mm affl
 1050 partially glazed door
 entrance mat
 timber floor
 drink shelf and mirror with concealed fluorescents
 full height mirror with access to svp
 partition set out to cover svp
 recessed drinks shelf
 tiled floor
 existing structural concrete block column clad in timber and p/board, with concealed lighting. see detail
 back bar
 bar servery
 shelves and racking for audio equipment
 1/2 hour fire partition
 fire escape stair
 disabled refuge under stair



4700
 1050
 1/2 hour fire construction p/board partition
 fire escape corridor
 1050 final exit door with panic bar and alarm
 banquette seating, tables and chairs
 1/2 hour fire rated escape stair
 drinks shelf
 new studpartition 1/2 hour fire separation.
 exiting wall various solid construction.
 new steel beam to reinforce existing structure
 new supporting column fixed to existing block column

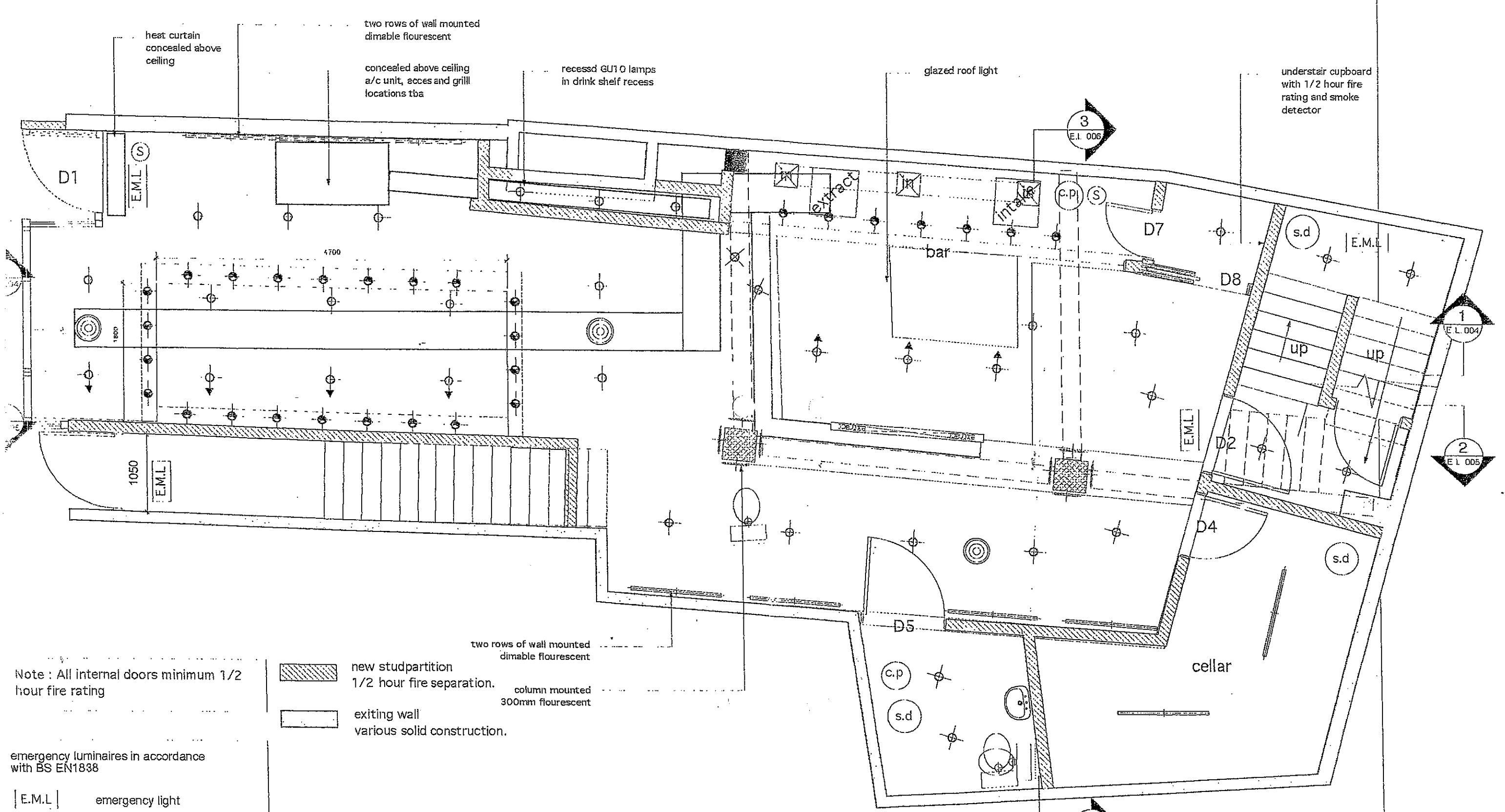
LICENSABLE AREA.

B 29.01.04 Re-design of scheme
 C 16.03.04 notation added
 D 05.05.04 toilet moved and bin store added. D1 booth removed
 E 11.11.04 re-design of scheme
 F 10.1.04 re-design of scheme
 G 1.2.05 bar amended

JOH
 trents
 8 Torwood st
 CREW
 P & R Roberts
 J Williams
 THE
 ground floor
 proposed GA
 SCALE
 1:50
 DRAWING NO

181.GA.001 F
 fruition

© 2005 Fruition
 www.fruition.co.uk



Note : All internal doors minimum 1/2 hour fire rating

emergency luminaires in accordance with BS EN1838

[E.M.L.] emergency light

[E.X.] exit light

type 'M' fire alarm system with items listed below

(c.p) manual call point

(hsd) heat/smoke detector

(s.d) smoke detector

(S) sound alarm

[Hatched Box] new studpartition 1/2 hour fire separation.
 [Solid Box] exiting wall various solid construction.

[Circle with Concentric Lines] 350 dia extract grill

[Circle with Dot] led wide beam spot

[Circle with Arrow] recessed directional GU10 spot

[Circle with Dot] recessed GU10 spot

[Line with Dashed] 1200 mm dimmable fluorescent

[Line with Dashed] 300mm fluorescent

Rev: A 7.2.05 emergency lighting, smoke detection and alarm reference plan

pre-trents

F. & P. Roberts
 J. Williams

1st floor proposed

1:50 @ A3 1:25 @ A1

181.CE.001 A

fruition

1st floor proposed